

Precautions for use

The product is not adapted for the following patients because measuring maximum tongue pressure or its movement may be difficult.

If judgment of adaptivity is difficult due to the patient's condition, check the condition by a doctor or a dentist, and then use the device safely under the instruction of the doctor or the dentist.

1. Patients who cannot recognize instructions by the operator (e.g. patients who cannot recognize instructions by the operator with dementia, anepia, agnosia, higher impairment, infants, the intellectual disabled, etc.)
2. Patients who cannot hold the Tongue Pressure Probe with front teeth (e.g. patients with edentulous jaw and without dentures)
3. Patients who cannot compress the Tongue Pressure Probe (e.g. patients who cannot move the tongue at all)

List of standards

Model number	Type	Packing Quantity / inner box
JM-TPM02	TPM-02	1 Unit
JF-TPP	Tongue Pressure Probe	25 pieces
JF-TPT	Connecting Tube	10 pieces

All 3 products are required for the use. (Each product is sold separately.)

Product specifications

Item	Specification
Product name	JMS Tongue Pressure Measurement Device
Type	TPM-02
Power supplies	AA alkaline battery x 2 or AA nickel-metal-hydrate rechargeable battery x 2
Electrical rating	Voltage
	DC3V (2 AA alkaline batteries) DC2.4V (2 AA nickel-metal-hydrate rechargeable batteries)
Electrical rating	Number of possible measurements
	Approx. 2,500 times (Assuming use of new batteries or rechargeable batteries within one month at room temperature)
Durability	5 years (Approx. 45,000 pressurization pump operations)
Dimensions	74(W)×120(L)×27.5(H)mm
Internal pressure adjustment function	Set value
	Adjustment time
	Accuracy of adjustment
Pressure measurement function	Display unit
	Display range
	Measurement accuracy
	Display method
Electric shock protection type	Internal power supply BF type applied parts
Drip-proof properties	IPX0
EMC (Electromagnetic compatibility)	IEC60601-1-2 Ed.3.0:2007
External output function	USB (Data communication only)
Option	Software for Tongue Pressure Measurement Data Display
Accessories	USB cable, Storage case, 2 AA alkaline batteries, Instruction for use, Operator's manual

Product specifications and designs might be changed for improvement without prior notice.



TEDA co

TEDAK Bldg., No. 3, Shohada Ashayer St., Dr. Shariati Ave., Tehran, Iran

Postal Code: 1613959617

Tel: +98(021) 77654216-21 Fax: (021) 77527137

www.teda.ir

تدا (تداركات درمان التيام)

JMTPM02.F.1 11/19



JMS Tongue Pressure Measurement Device

TPM-02



JMS Co., Ltd. hopes patients could improve oral function. "Orarize" is a compounded word generated by "Oral" and "Rise". This is our brand used for all oral function improvement products.

Features

JMS Tongue Pressure Measurement Device is the device to measure the tongue's motor function as the maximum tongue pressure.

The measured become indicators for screening of oral function inspections related to swallowing and articulation. (Please do not make a definitive diagnosis with only the measurement results obtained with this device.)



Swallowing Disorder

You may have to consider the possibility of swallowing disorder if following events increase;

- Choke frequently while eating
- Have not choked before but now, sometimes feel choking
- Avoid eating foods which may cause choking easily
- Swallow foods with drinks (e.g. tea) frequently
- Food remains in the mouth after swallowing

Rehabilitation Effect

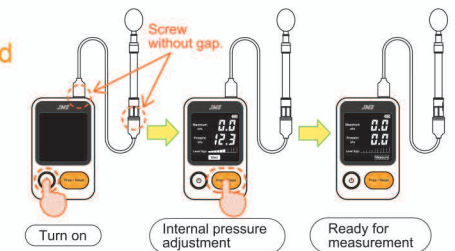
Swallowing function is highly related with the tongue's motor function. The people who have weaker tongue pressure sometimes choke. As the result, such people could not take in food and eventually, there is a risk of undernutrition. **It is important to do a rehabilitation training for tongue** as with a mustle training for whole body in order to prevent undernutrition.

Operating Method

STEP 1

Connect each component and enter the standby mode.

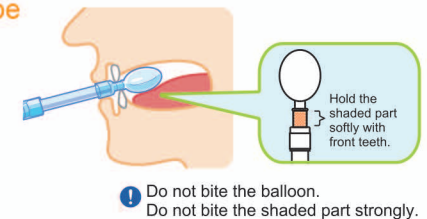
Connect Digital Tongue Pressure Meter, Tongue Pressure Probe and Connecting Tube then adjust the internal pressure.



STEP 2

Insert the Tongue Pressure Probe into the patient's oral cavity.

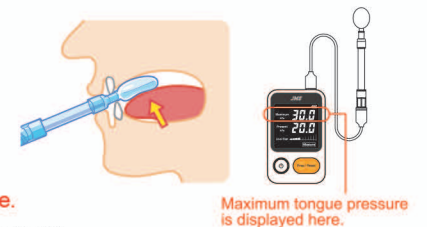
Insert the Tongue Pressure Probe into the patient's oral cavity and instruct the patient to gently hold the hard ring of the Tongue Pressure Probe with the front teeth.



STEP 3

Measure the maximum tongue pressure.

Keep compressing the balloon for several seconds. (approximately 7 seconds)



'Software for displaying the tongue pressure measurement data

The tongue pressure measurement data sent from the Digital Tongue Pressure Meter is output to a personal computer and displayed as digital values, waveform graphs, and a level sign. Please install the software with the CD-R included to the product.

